

HOPE VALLEY

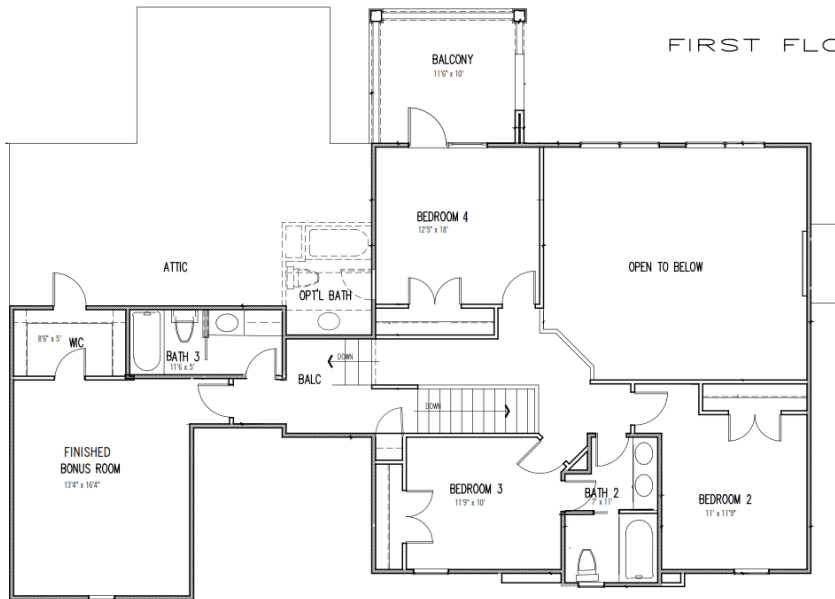
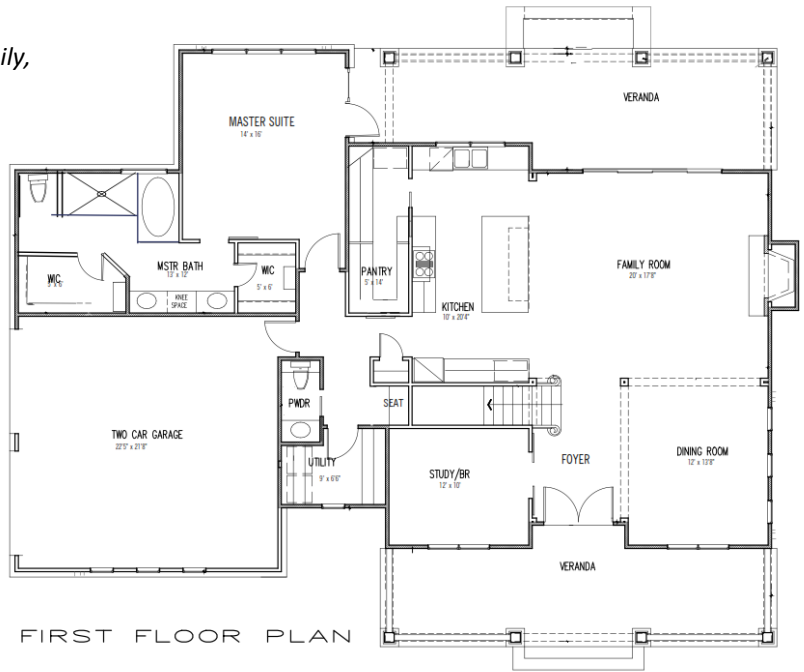
Country living, close to everything.



The picture is a rendition of the home to be built

4 bedrooms, 3 1/2 bath, 1 Bonus Room, Office, Dining, Family, Utility, Mudroom, Scullery w/ Pantry & Pass-through

AREAS:	
FIRST FLOOR =	1766 SF
SECOND FLOOR =	1134 SF
HEATED AREA =	2900 SF
GARAGE =	507 SF
FRONT PORCH =	283 SF
REAR PORCH =	304 SF
TOTAL NET COVERED AREA =	3620 SF
OPT'L BATH =	57 SF



**LAWRENCE
HOMES, INC.**
LAWRENCEHOMESINC.COM