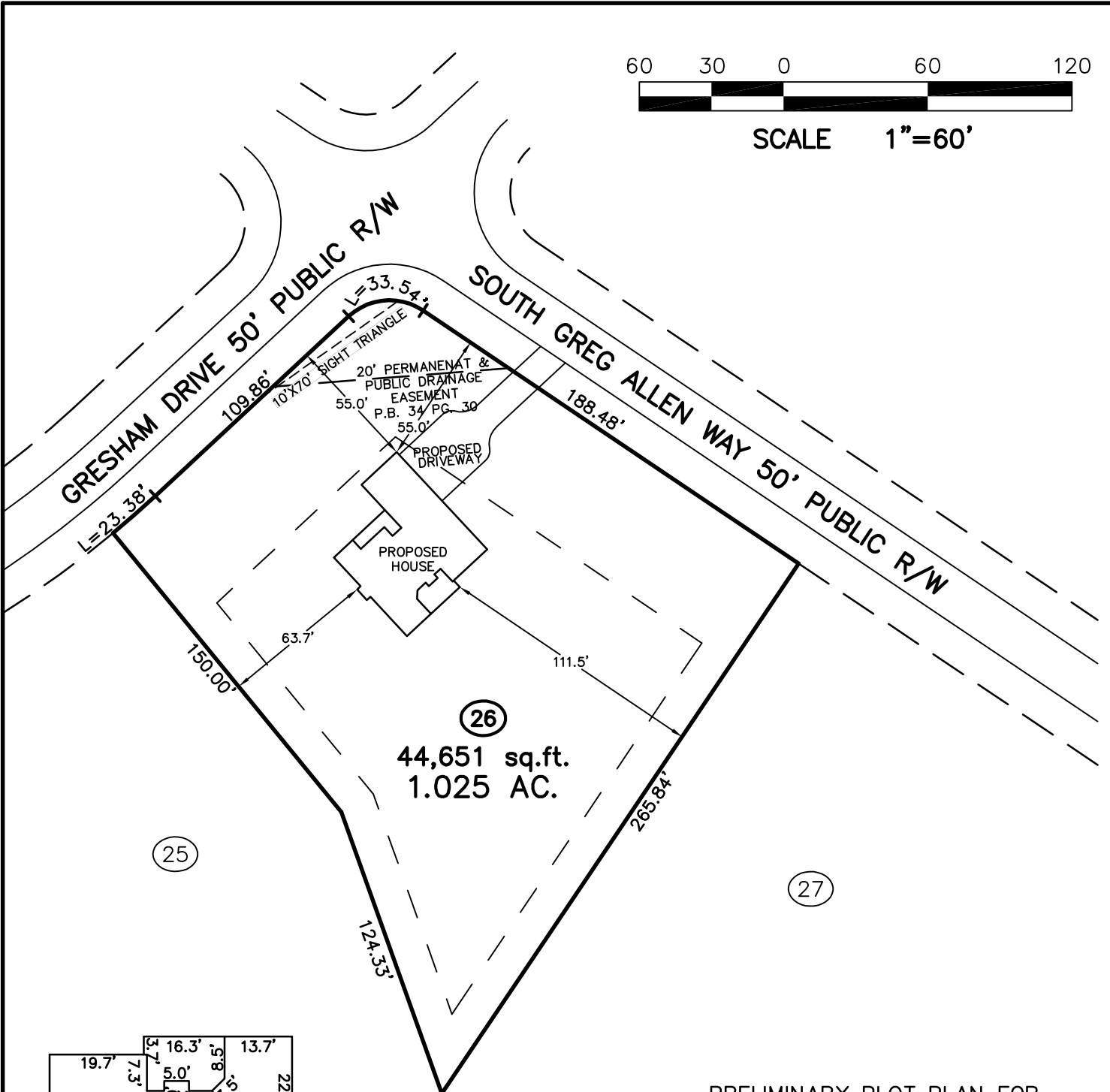


60 30 0 60 120



SCALE 1"=60'



25

26

27

44,651 sq.ft.
1.025 AC.

PRELIMINARY PLOT PLAN FOR

LAWRENCE HOMES

LOT 26, GRESHAM CROSSING SUBDIVISION

4321 S. GREG ALLEN WAY

REF: P.B. 44, PAGE 24

FISHING CREEK TOWNSHIP

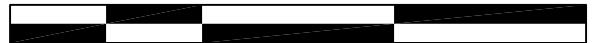
GRANVILLE COUNTY, NORTH CAROLINA

SEPTEMBER 13, 2021

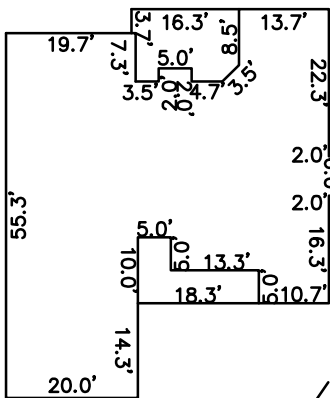
REVISED JUNE 21, 2022

ZONED AR-40

60 30 0 60 120



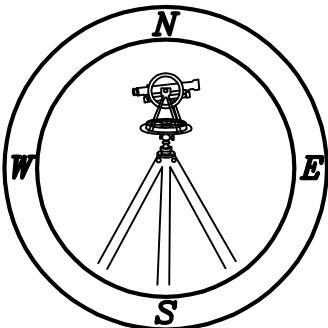
SCALE 1"=60'



IMPERVIOUS SURFACE TABLE

HOUSE	2,256 S.F.
COVERED PORCH	162 S.F.
DRIVEWAY	694 S.F.
SIDEWALKS	85 S.F.
MISC/UTILITIES	21 S.F.
TOTAL IMPERVIOUS AREA	3,218 S.F.
TOTAL LOT AREA	44,651 S.F.
PERCENTAGE OF IMPERVIOUS AREA	8.04 %

THIS SURVEYOR DOES NOT WARRANT THE ACCURACY OF ARCHITECTURAL DIMENSIONS. THEY ARE TO BE VERIFIED BY THE CONTRACTOR.



CAWTHORNE, MOSS & PANCIERA, P.C.

Professional Land Surveyors
C-1525

333 S. White Street
Post Office Box 1253
Wake Forest, N.C. 27588
(919)556-3148

NOTES:

- THIS PLAN DOES NOT REFLECT AN ACTUAL SURVEY. IT IS A PRELIMINARY PLAN AND SHOULD BE USED FOR ITS INTENDED PURPOSE ONLY.
- NOT FOR RECORDATION, CONVEYANCES, OR SALES.