

PRELIMINARY PLOT PLAN FOR

LAWRENCE HOMES

LOT 161, IRONWOOD SUBDIVISION, PH.3

RIVER CLUB WAY

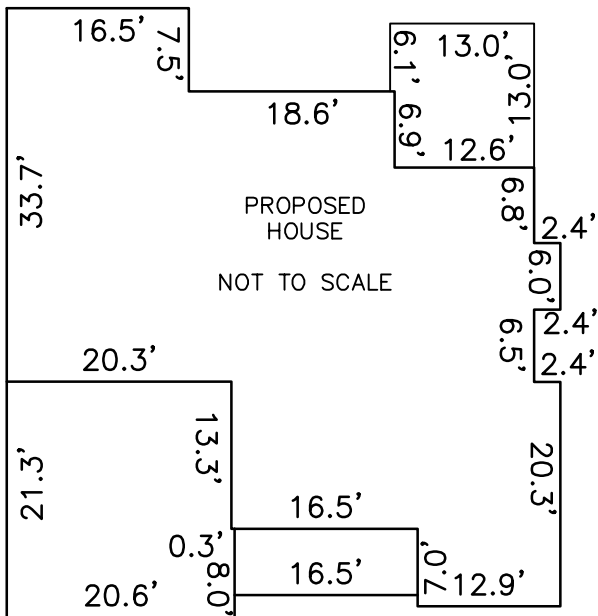
REF: P.B. 51, PG. 64

BRASSFIELD TOWNSHIP

GRANVILLE COUNTY, NORTH CAROLINA

MAY 11, 2022

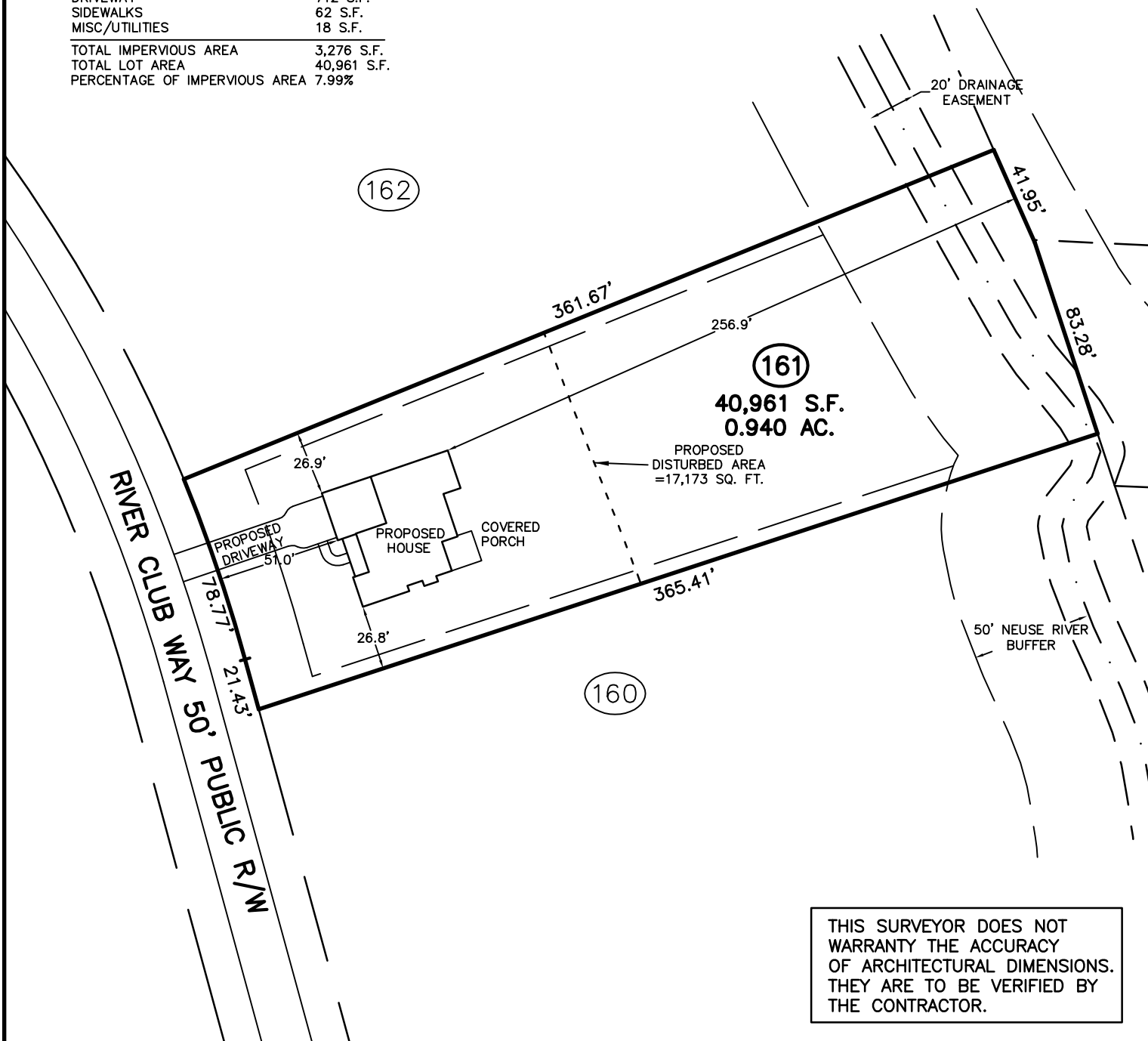
ZONED AR-40



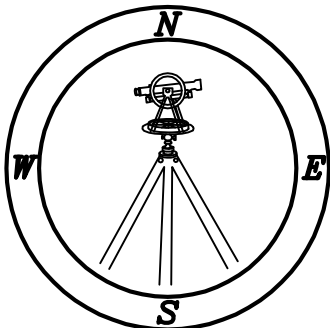
SCALE 1"=60'

IMPERVIOUS SURFACE TABLE

HOUSE	2,318 S.F.
SCREEN PORCH	166 S.F.
DRIVEWAY	712 S.F.
SIDEWALKS	62 S.F.
MISC/UTILITIES	18 S.F.
TOTAL IMPERVIOUS AREA	3,276 S.F.
TOTAL LOT AREA	40,961 S.F.
PERCENTAGE OF IMPERVIOUS AREA	7.99%



THIS SURVEYOR DOES NOT WARRANTY THE ACCURACY OF ARCHITECTURAL DIMENSIONS. THEY ARE TO BE VERIFIED BY THE CONTRACTOR.



CAWTHORNE, MOSS & PANCIERA, P.C.

Professional Land Surveyors
C-1525

333 S. White Street
Post Office Box 1253
Wake Forest, N.C. 27588
(919)556-3148

NOTES:
 -THIS PLAN DOES NOT REFLECT AN ACTUAL SURVEY. IT IS A PRELIMINARY PLAN AND SHOULD BE USED FOR ITS INTENDED PURPOSE ONLY.
 -NOT FOR RECORDATION, CONVEYANCES, OR SALES.