

PRELIMINARY PLOT PLAN FOR

# LAWRENCE HOMES

LOT 152, IRONWOOD SUBDIVISION, PH.3

RIVER MANOR COURT

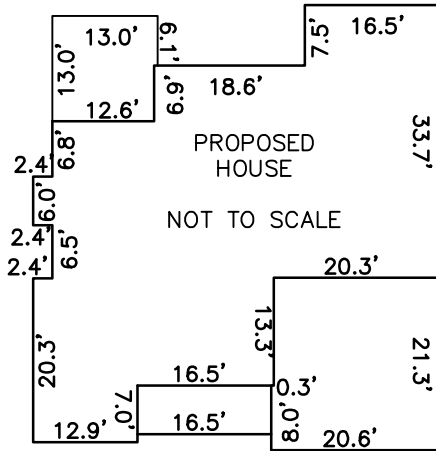
REF: P.B. 51, PG. 64

BRASSFIELD TOWNSHIP

GRANVILLE COUNTY, NORTH CAROLINA

MAY 11, 2022

ZONED AR-40



PROPOSED HOUSE

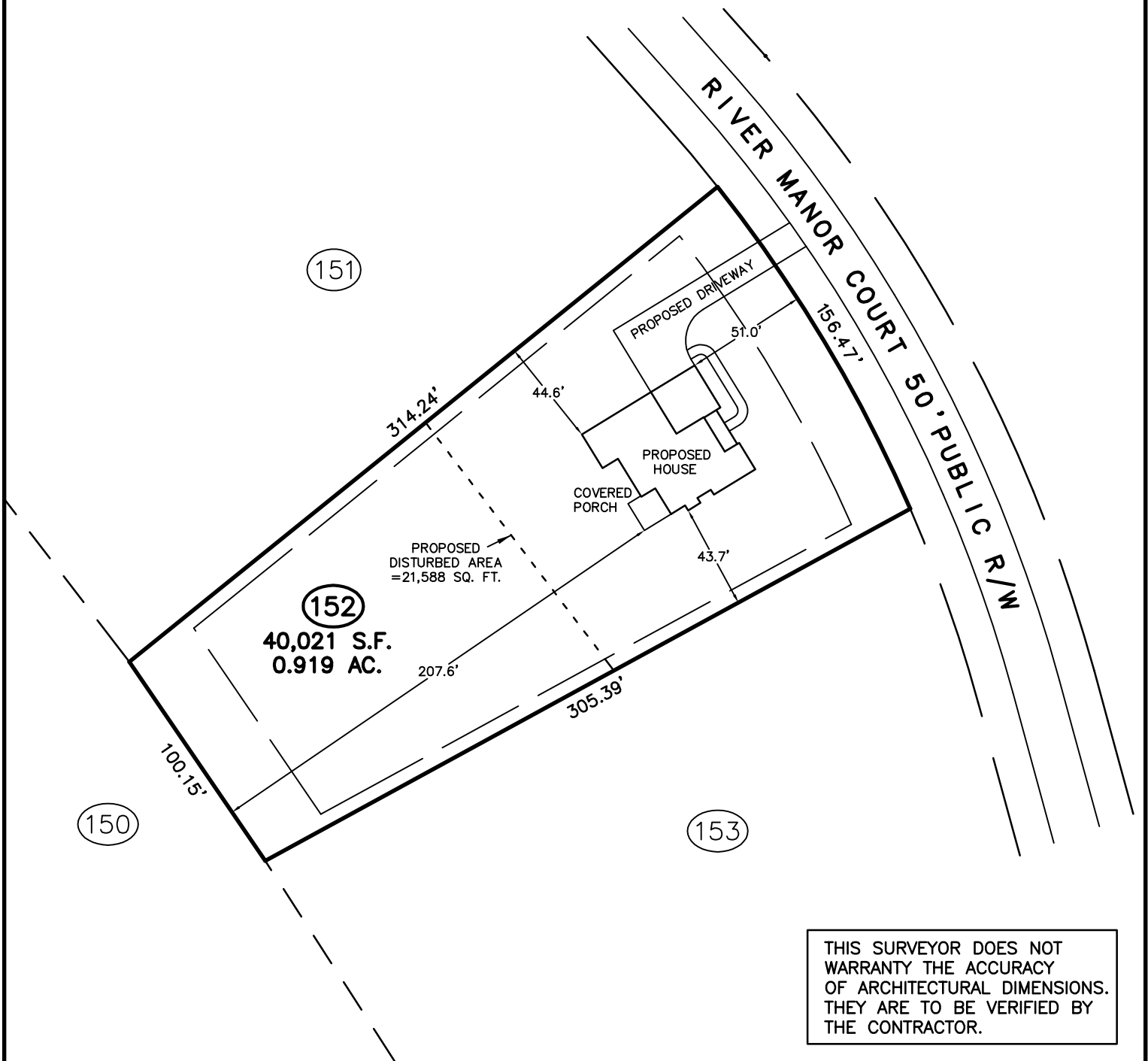
NOT TO SCALE

IMPERVIOUS SURFACE TABLE

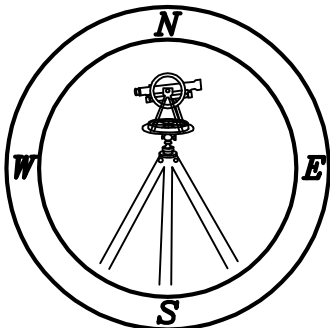
HOUSE	2,318 S.F.
COVERED PORCH	166 S.F.
DRIVEWAY	1,287 S.F.
SIDEWALKS	190 S.F.
MISC./UTILITIES	18 S.F.
TOTAL IMPERVIOUS AREA	3,979 S.F.
TOTAL LOT AREA	40,021 S.F.
PERCENTAGE OF IMPERVIOUS AREA	9.42%



SCALE 1"=60'



THIS SURVEYOR DOES NOT WARRANTY THE ACCURACY OF ARCHITECTURAL DIMENSIONS. THEY ARE TO BE VERIFIED BY THE CONTRACTOR.



## CAWTHORNE, MOSS & PANCIERA, P.C.

Professional Land Surveyors  
C-1525

333 S. White Street  
Post Office Box 1253  
Wake Forest, N.C. 27588  
(919)556-3148

### NOTES:

-THIS PLAN DOES NOT REFLECT AN ACTUAL SURVEY. IT IS A PRELIMINARY PLAN AND SHOULD BE USED FOR ITS INTENDED PURPOSE ONLY.  
-NOT FOR RECORDATION, CONVEYANCES, OR SALES.